



# EVO II Dual 640T V3

Power. Efficiency. Reliability.



RADIOMETRIC



15  
KILOMETERS

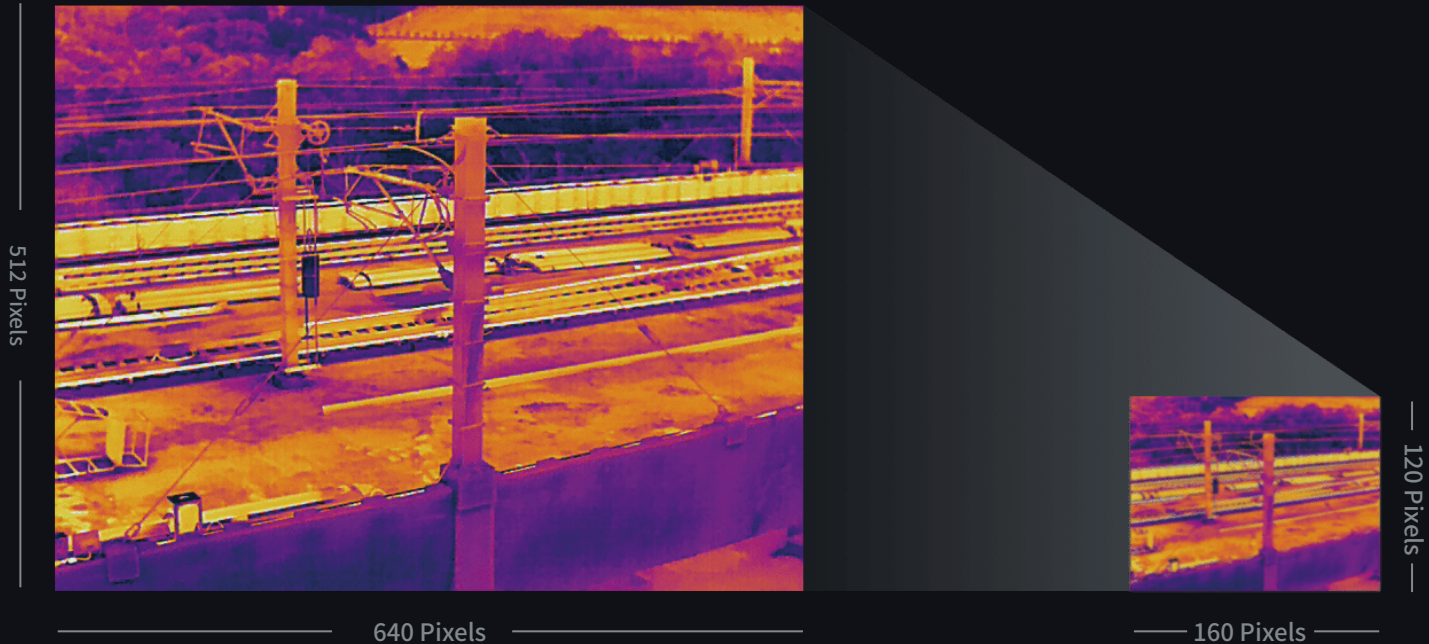


38  
MINUTES



# 640x512 30Hz New Thermal Imaging Sensor




Equipped with 640\*512 high-resolution thermal imaging camera featuring a 13mm focal length lens and 16x digital zoom, it is easy to observe distant targets. The system uses a new image processing algorithm, making thermal imaging details clearer and more discernible than competition with the similar resolution and hardware.

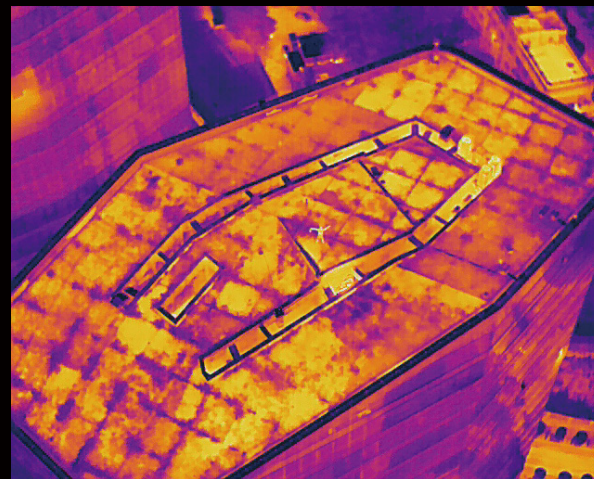


# DRI Ranges

See a specific subject's identity, activity, or personal items.

- **Detection:** Detect if an object is present.
- **Recognition:** See what type of object it is (i.e. person, vehicle, airplane).
- **Identification:** Determine subject affiliation and intent.

	 <b>Person</b>	 <b>SUV</b>	 <b>Truck</b>
<b>Dimension</b>	1.8*0.5m	4.2*1.8m	6*4m
<b>Detection</b>	542m	1661m	2889m
<b>Recognition</b>	135m	415m	722m
<b>Identification</b>	68m	208m	361m



# Multiple Temperature Measurement Modes



## Central temperature measurement Spot temperature measurement Regional temperature measurement

Central temperature measurement: View real-time display of the temperature in the center area of the screen.

Spot temperature measurement: Tap the screen, and the temperature of the selected object will be displayed in real time.

Regional temperature measurement: Get a dynamic view of the average temperature, maximum temperature, and minimum temperature displayed in a selected area.



## 10 Thermal Color Palettes

White Hot | Cold and Hot | Rainbow | Enhanced Rainbow  
| Ironbow | Lava | Arctic | Searing | Gradation | Heat  
Detection



## Picture-in-Picture Display Mode

Visual and thermal imagery are combined to help users quickly interpret data and aid in critical decision making.



## Temperature Alarm | Isotherm | Image Enhancement

Temperature alarm: Monitors the screen temperature in real time. The system prompts the user when the temperature reaches a set threshold.

Isotherm: Set a temperature range and the system will detect any objects within the temperature range specified.

Image enhancement: Supports real-time adjustment of image brightness, contrast, and image details. The system will highlight any objects within the temperature target.



## Powerful Infrared Thermal Analysis Tool

IRPC TOOL: This free temperature measurement analysis tool is developed specifically for the 640T, and enables users to quickly import images, edit and analyze temperature measurements, and generate detailed reports for sharing and collaboration.





## 50MP Ultra-Sensitive Camera

The EVO II Dual 640T V3's special RYYB sensor features a moonlight algorithm 2.0 that provides excellent noise suppression in limited lighting conditions, further enhancing its 50 megapixel camera to give users more details for better forensics and analysis.

### .8" Sensor Size

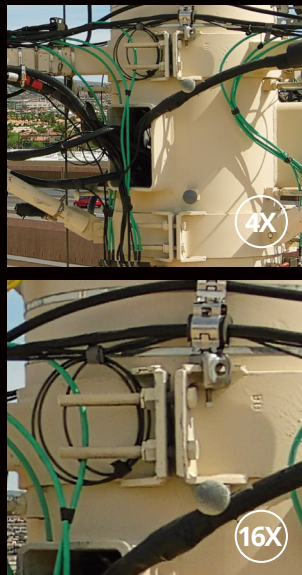
The EVO II Dual 640T V3's .8" RYYB CMOS offers up to 144%~233% more surface area when compared to 1/2" or 1/2.3" competitors for maximum details in high contrast lighting conditions.

### RYYB Sensor Technology

RYYB sensor technology moves away from RGB cameras by offering up to 40% more light sensitivity in low light scenarios.

### PDAF+CDAF Autofocus System

Never lose sights of your subjects with a combination of PDAF (Phase Detection Auto Focus) and CDAF (Contrast Detection Auto Focus) technology for fast and accurate tracking.



## See The Scene With 16x Digital Zoom

The system supports 16x digital zoom and 4x lossless zoom, providing long-distance image acquisition and detailed insight into scenes safely and without detection.



## 4K HDR For Greater Dynamic Range

4K HDR automatically balances overexposure and underexposure when shooting scenes with too much contrast, producing clearer images with more layers.



# SkyLink 2.0 Video Transmission

EVO II Dual 640T V3 is upgraded with Autel's all new SkyLink 2.0 Video Transmission technology.

## 15KM

Fly farther with HD video transmission up to 15km.

## QHD

Get on-screen QHD video within 1km. Obtain critical details with a resolution of 2560 x 1440 for a total of 3,686,400 pixels—about 1.8x the pixels of an FHD monitor.

## 2.4G/5.8G/900MHz

Support tri-band communication automatically frequency hop for maximum anti-interference capability.

\*900MHz is only applicable for FCC countries.





# 360° Obstacle Avoidance

Equipped with 19 groups of sensors including 12 visual sensors, the main camera, ultrasound, IMUs and other sensors enable building of three-dimensional maps and path planning in real time.



\*Please refer to the manual for details on obstacle avoidance and its limitations, which may or may not work in limited lighting environments, under direct strong sunlight, or across thin tree branches or wires.

# Practical And Convenience Features

## Deploy Rapidly

Deploy in under a minute.  
The EVO II 640T V3 can go from its case to the air in 45 seconds.

## No Forced Updates\*\*

EVO II Dual 640T V3 does not need to be on the latest hardware or app version in order to take off unlike other competitors.



## No Fly Zones\*

EVO II Dual 640T V3 does not have any no fly zones and will not prevent the pilot from taking off.

## Non-ITAR

More export freedoms as the EVO II Dual 640T V3 is not under US's International Traffic in Arms Regulations.

\* Please fly safely and consult your local laws and regulations. Autel Robotics is not liable for any unauthorized flights.

\*\* It's required to update the latest firmware and app to enjoy comprehensive warranty. More information please refer to warranty policy.

# Industry Leading Performance

**38** minutes

Maximum  
Flight Time

**9.3** miles (15km)

Maximum  
Transmission Range

**27** mph (12m/s)

Maximum  
Wind Resistance

**45** mph (20m/s)

Maximum  
Flight Speed

**2** lbs (920g)

Maximum  
Lift Capability





# Autel Smart Controller V3

Smart Controller V3's 7.9-inch, 2000nits high-brightness screen is clearly visible even under direct sunlight. SkyLink 2.0 Transmission technology guarantees long-distance operations from up to 15km away and enhances anti-interference abilities with triple band frequency hopping. The customized Android system allows for additional flexibility with 3rd party Apps and an IP43 rating ensures all weather performance.



7.9-Inch  
HD Touch Screen



-20°C to 40°C  
Temperature Range



2000nits  
Maximum Brightness



IP43 Resistance



# Broadcast With Live Deck 2

Broadcast live mission intel to other personnel in the operation for enhanced situational awareness and critical decision making. The EVO II Enterprise V3 is compatible with Live Deck 2, which offers multiport streaming to monitors and Wifi support for multiple smart phones.



**1080P/60FPS  
Video Stream**



**Three  
Auto-Switch Bands**



**12KM  
Transmission Range**



**IP43 Resistance**



# Application



## Line Inspections

Reduce costs, increase safety, and improve inspection workflow.



## Firefighting

Locate hotspots, provide overwatch, and shorten response times.



## Security

Perform overwatch, conduct forensics, accident reconstruction and crowd monitoring.



## Search & Rescue

Identify subjects, reduce response times, and optimize search area with mission planning.



## Chemical

Inspect plants more efficiently while improving work safety and lowering costs.



## Solar

Streamline the inspection process, discover defects or faulty hardware using the thermal payload.

# Specifications

## Aircraft

Takeoff Weight	1150g
Size (L*W*H)	230x130x108 mm (folded) 457x558x108 mm (unfolded)
Service Ceiling Altitude	7000m
Max. Flight Speed	20m/s
Flight Time (No Wind)	38mins
Operating Temperature Range	-10°C ~ 40°C
Resistance to Wind	27mph, 12 m/s (Take-off and landing)

## RC and Image Transmission

Max Transmission Distance (Unobstructed, Free of Interference)	FCC: 15km CE: 8km
Display Screen	2048x1536 60fps
Operating Time	~3 hours (Max. Brightness); ~4.5 hours (50% Brightness)
Charging Time	90 mins
Internal Storage	ROM 128GB

## Thermal Camera

Lens	FOV: H33°V26°; Focal length: 13mm
Zoom	1-16x
Wavelength Range	8~14μm
Temperature Measurement Accuracy	±3°C or ±3% of reading (whichever is greater); @Environmental temperature-20°C~60°C
Accurate Temperature Measurement Distance	2-20m
Video Resolution	640x512@30fps
Photo Resolution	Infrared mode: 640*512 Picture-in-picture mode: 1920*1080, 1280*720

## Visible Light Camera

Sensor	1/1.28"(0.8") CMOS; 50M effective pixels
Lens	FOV: 85°; 35mm format equivalent focal length: 23mm Aperture: f/1.9; Focus range: 0.5m to infinity (with auto focus)
ISO Range	Video: 100-64000; Photo: 100-6400
Zoom	1-16x (up to 4x lossless zoom)
Maximum Photo Size	8192*6144 (4:3) ; 4096*3072 (4:3) ; 3840x2160 (16:9)
Video Resolution	3840x2160P60/P50/P48/P30/P25/P24 2720x1528P60/P50/P48/P30/P25/P24 1920x1080P60/P50/P48/P30/P25/P24



[www.autelrobotics.com](http://www.autelrobotics.com)